

Wood Lathe Shield Instruction Manual

DANRAY Products LLC
MACHINE SAFEGUARDS AND ACCESSORIES



Thank you for purchasing a Danray Products lathe shield. This versatile and durable shield can be used in many machine applications. This quality-made, heavy-duty shield is proudly made in the United States of America.

Lathe shields protect people from rotating machine parts, workpieces, and flying chips. When applied properly, they will comply with applicable OSHA and ANSI safety standards. If turning is done beyond the shield or chips fly out from the open ends, additional shields or guards may be required. For additional shields, see our website or catalog.

The enclosed safety sign identifies and warns individuals against specific hazards. Our signs comply with OSHA 29 CFR 1910.145 and the ANSI Z535 series of standards for the design, application, and use of signs, colors, and symbols for accident prevention.

TF 1.866.482.6807 / P 815.262.6667 | 973 Featherstone Road, Unit 115, Rockford, Illinois 61107 | www.danrayproducts.com / service@danrayproducts.com

DANRAY Products LLC
MACHINE SAFEGUARDS AND ACCESSORIES

Copyright © 2011 by Danray Products LLC. All rights reserved.

Manual No. MAN-007

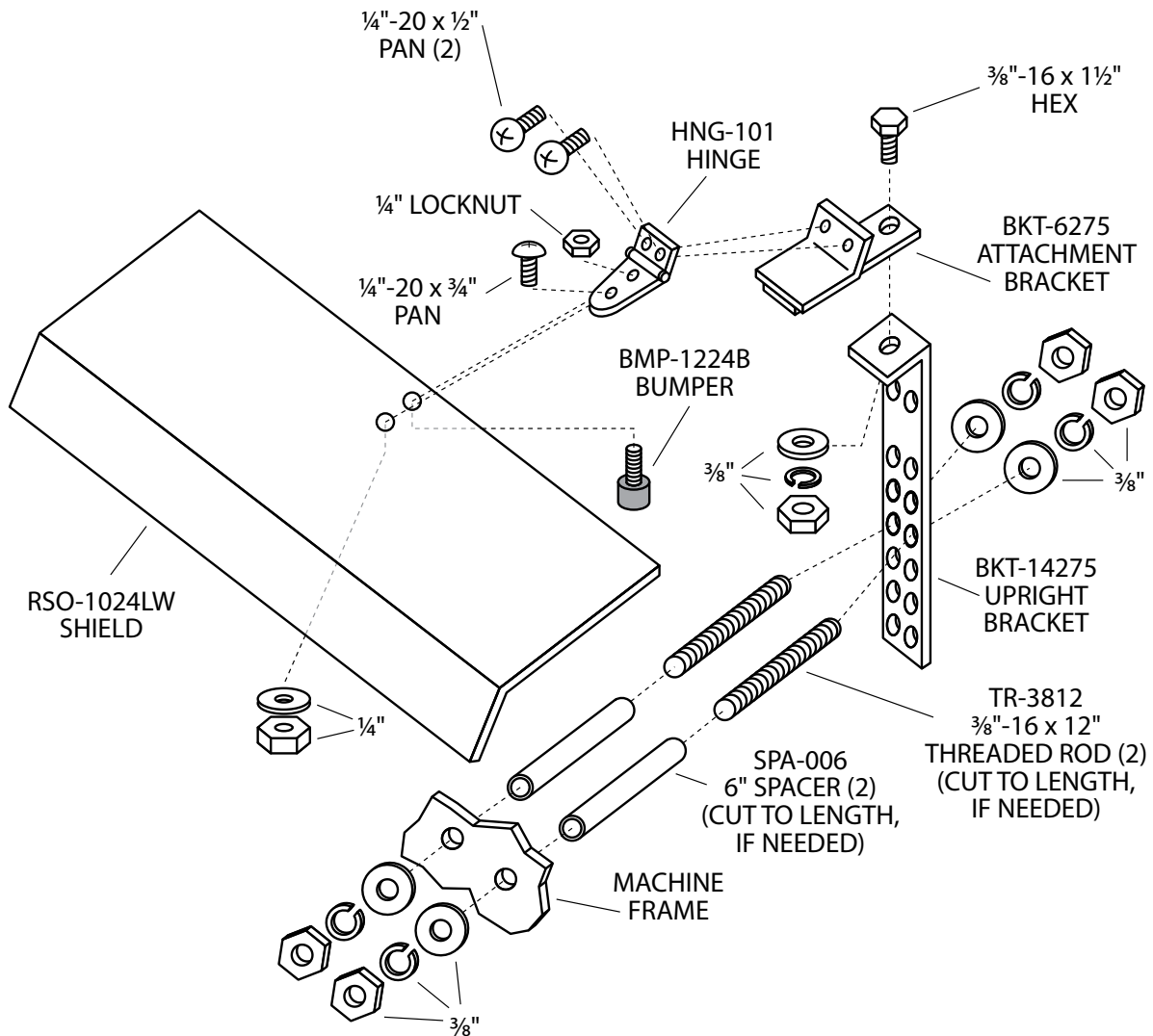
Assembling and Installing the Shield

The wood lathe shield assembly includes the shield, mounting brackets, hinge(s), bumper(s), and fasteners. To assemble, take all of the above components out of the shipping container, remove all protective packaging, and lay them out on a bench as illustrated in the drawing below or on the next page. First, assemble the hinge(s) to the shield. Then, assemble the shield to the attachment bracket using the fasteners provided. To make sure that all parts will align, do not tighten the fasteners until the shield is completely assembled on the lathe.

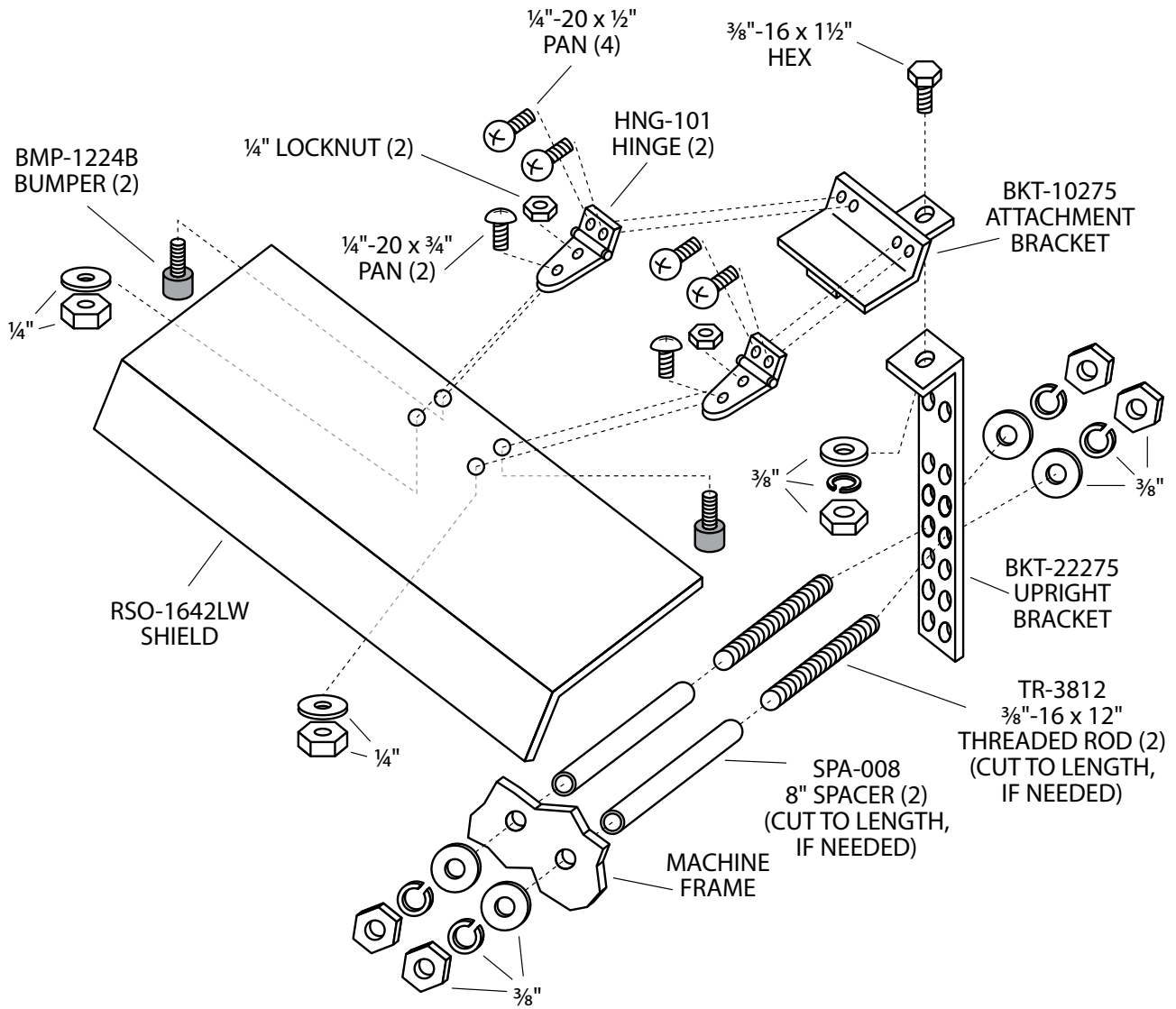
On the backside of the lathe, locate an area in approximately the center of the machine bed where the upright bracket can be mounted. Drill two $\frac{3}{8}$ " clearance holes on $1\frac{1}{4}$ " centers. Mount the upright bracket to the machine bed using the spacers and threaded rods provided. If the spacers are too long, cut them to length. After the upright bracket is securely attached to the machine bed, install the shield by fastening the attachment bracket to the upright bracket. Align and tighten all fasteners and the installation will be complete.

WARNING If you are mounting the shield to a surface that has internal components or liquid, be careful not to drill through this surface which may cause damage, leakage, or electrical shock.

Illustrated Below: Shield Assembly SHD-1024LW



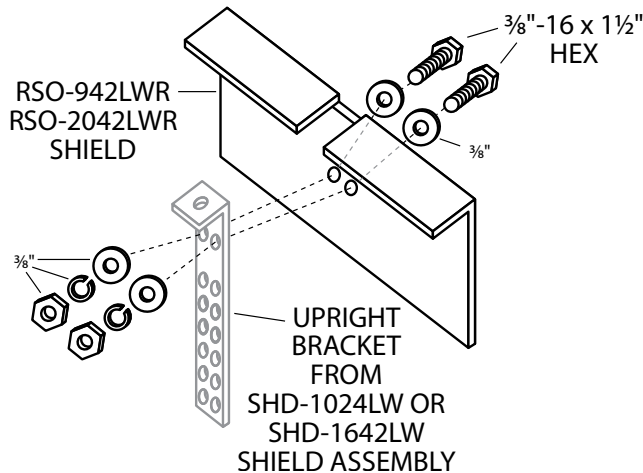
Illustrated Below: Shield Assembly SHD-1642LW

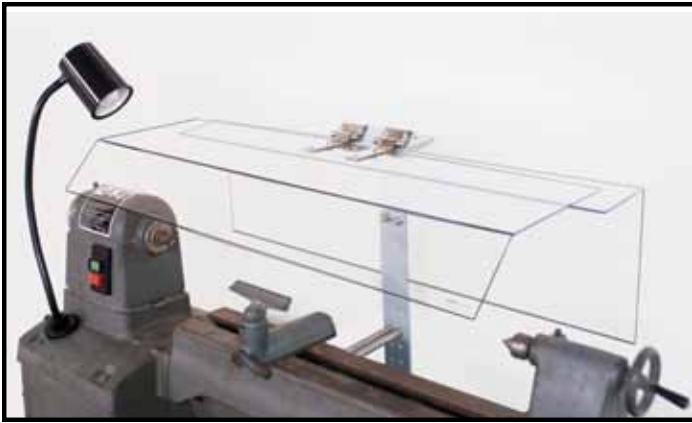


Installing the Optional Rear Shield

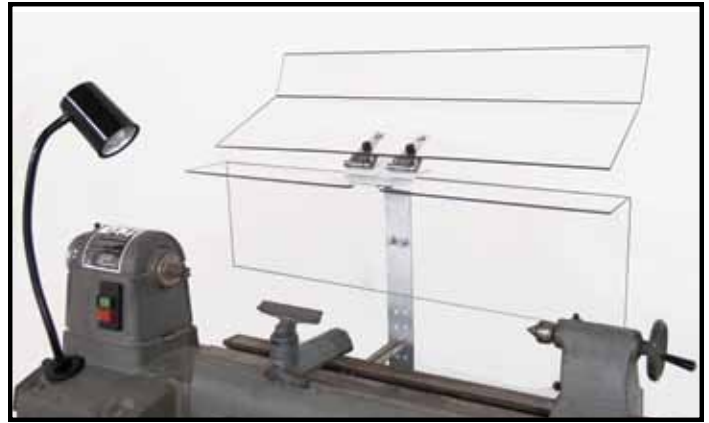
The optional rear shield assembly includes the shield and fasteners. To install, attach the shield to the upright bracket using the fasteners provided as illustrated in the drawing below.

Illustrated Below: Optional Rear Shield Assemblies SHD-924LWR and SHD-2042LWR






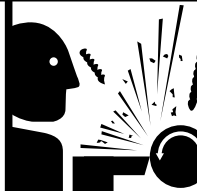

Shield in the down position when operating the lathe. When installing the shield, make sure it is positioned so that it will not obstruct an operator while turning a workpiece.



Shield in the up position for changing the workpiece. Be sure to move the shield back into the down position before operating the lathe.

One LBL-005 sign is included with every shield assembly. Affix this sign to a prominent location on the machine so that it is easily seen and understood by individuals in the hazard area. Additional signs for other machinery and equipment are available as well as polycarbonate sign backings; contact us by phone, fax, e-mail, or online.

! DANGER

Rotating chucks and workpieces on LATHES can cut, dismember, snag, and entrap, causing serious injury or death.

- Use shields or other safeguards to protect individuals.
- Keep hands and body clear while operating.
- Restrain loose clothing and long hair.
- Do not wear jewelry.

Flying chips, sparks, coolant, and other particles can cause serious injury or death.

- Use shields or guards to protect individuals.
- Always wear personal protective equipment.

Remove chuck key before starting machine.

Lock out power before servicing.

This sign is not intended to cover all safety hazards.

© 2009 by Danray Products LLC
Label No. LBL-005

www.danrayproducts.com

Part No. LBL-005

Cleaning and Maintenance of the Shield

The shield itself is made of a polished, UV-stabilized polycarbonate. To clean the shield, thoroughly rinse it with warm water using a soft cloth or sponge. Then wash it with mild soap or detergent (such as Formula 409, Top Job, Joy, Palmolive Liquid, or Windex) and rinse it thoroughly with clean water. To prevent water spots, dry the shield with a chamois or moist sponge. Avoid cleaning the shield in direct sunlight to prevent streaking.

CAUTION Do not use abrasive cleaners or harsh solvents for cleaning; this may damage the polycarbonate shield.